

COMOX VALLEY REGIONAL DISTRICT

BYLAW NO. 637

A bylaw to amend the Black Creek Community Centre Contribution Service to expand the boundaries and purpose to include providing capital and operating support for community facilities and to increase the maximum requisition

WHEREAS the Black Creek Community Centre Contribution Service was created by the adoption of Bylaw No. 47 being “Black Creek Community Centre Contribution Service Establishment Bylaw No. 47, 2009” on the 30th day of July 2009;

AND WHEREAS the board wishes to amend the service by expanding the boundaries, increasing the maximum requisition and amending the purpose to include providing capital and operating assistance for approved community facilities within a portion of Electoral Area B and Electoral Area C and to;

AND WHEREAS the approval of the Inspector of Municipalities has been obtained under section 342 of the *Local Government Act (RSBC, 2015, C. 1)*; and

AND WHEREAS participating area approval has also been obtained under section 342 of the *Local Government Act (RSBC, 2015, C. 1)*;

NOW THEREFORE the board of the Comox Valley Regional District in open meeting assembled enacts as follows:

Amendment

1. Bylaw No. 47 being “Black Creek Community Centre Contribution Service Establishment Bylaw No. 47, 2009” is hereby amended by:

- (a) Inserting a new section 1 (Definitions) as follows and renumbering the existing sections accordingly:

“Definitions

1. In this bylaw, unless the context otherwise requires:

“community facilities” means any CVRD Board-approved public building or buildings located within the boundaries of the service area and that is owned and operated by a not-for-profit organization or the CVRD and that is used for public athletic, social, cultural or recreational activities.

“expenses” means expenses related to operating and maintaining the community facilities.

“eligible organization” means a registered not-for-profit organization in good-standing with the provincial or federal government.

- (b) Replacing section 1 (Service) which reads:

- “(1) The service established by this bylaw is to contribute towards the operation of the Black Creek community centre in Puntledge – Black Creek (Electoral Area ‘C’).
- (2) The service shall be known as the Black Creek community centre contribution service (the “service”).”

with the following:

- “(1) The service established by this bylaw is to provide financial assistance to eligible organizations for expenses related to maintaining and operating community facilities.
- (2) The service shall be known as the Puntledge North Community Facilities Support Service (the ‘service’).”

(c) Replacing section 2 (Boundaries) which reads:

“The boundaries of the service are those portions of Puntledge – Black Creek (Electoral Area ‘C’) as identified in schedule ‘A’ attached to and forming part of this bylaw.”

with the following:

“The boundaries of the service are those portions of Electoral Area B (Lazo North) and Electoral Area C (Puntledge-Black Creek) as identified in Schedule ‘A’ attached to and forming part of this bylaw.”

- (d) Extending the boundaries of the service area to include the properties outlined on Schedule ‘B’ attached to and forming an integral part of this bylaw.
- (e) Replacing schedule “A” with the schedule “A” that is attached to this bylaw to show the boundaries of the service, being those portions of Electoral Area B (Lazo North) and Electoral Area C (Puntledge-Black Creek) as shown on schedule ‘A’.
- (f) Replacing section 3 (Participants) which reads:

“The participating area for the service is Puntledge – Black Creek (Electoral Area ‘C’) (the “participating area”).”

with the following:

“The participating area for the service is Electoral Area B (Lazo North) and Electoral Area C (Puntledge – Black Creek) (the “participating area”).”

(g) Replacing section 5 (Maximum Requisition) which reads:

"The maximum amount that may be requisitioned under section 4 annually for the cost of the service is the greater of \$72,500 or \$0.14 per \$1,000 of net taxable value of land and improvements in the service area."

with the following:

"The maximum amount that may be requisitioned under section 5 annually for the cost of the service is the greater of \$144,325 or \$0.05675 per \$1,000 of net taxable value of land and improvements in the service area."

Citation

This Bylaw No. 637 may be cited as "Black Creek Community Centre Contribution Service Establishment Bylaw No. 47, 2009, Amendment No. 2".

| | | |
|---|---------------|--------------|
| Read a first and second time this | day of | 2021. |
| Read a third time this | day of | 2021. |
| Approved by the Inspector of Municipalities this | day of | 2021 |
| Received participating area approval this | day of | 2021 |
| Adopted this | day of | 2021. |

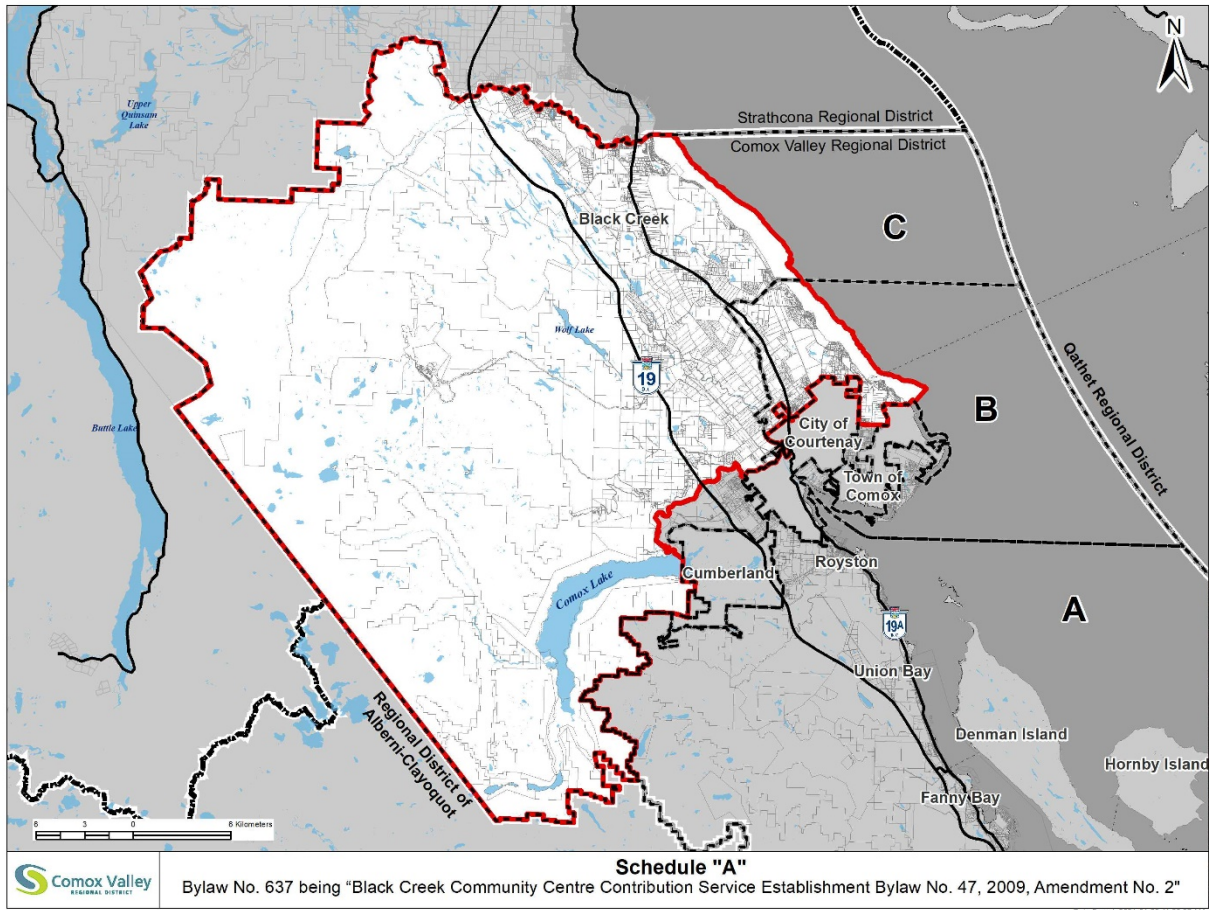
Chair

Corporate Legislative Officer

I hereby certify the foregoing to be a true and correct copy of Bylaw No. 637 being "Black Creek Community Centre Contribution Service Establishment Bylaw No. 47, 2009, Amendment No. 2" as adopted by the board of the Comox Valley Regional District on the day of 2021.

Corporate Legislative Officer

Schedule A



Schedule B

